



# 2024 Annual Report

## Content and Services to the Community



# Mission, Vision and Values

## Mission Statement

WGTE Public Media is dedicated to enabling personal development and civic improvement by the innovative use of technology to educate, enlighten, enrich, engage, entertain, empower and explore.

## Vision Statement

WGTE Public Media shall be a trusted, valued, dynamic and essential resource for quality and innovation. WGTE Public Media shall pursue excellence as an historian, a story teller, documentarian, educator and entertainer to sustain a community of lifelong learners.

## Value Statement

WGTE Public Media will always be:

- Civil – by being a positive and constructive force in discourse and in our dealings with others
- Ethical – with each other and in all business matters
- Accountable – by being open in our dealings
- Respectful – of others' cultures, values and diversity
- Independent – by being free of commercial influence
- Impartial – by being objective, fair and just in the choice and presentation of content
- Honest – by having the highest integrity
- Creative – in order to ensure our success
- Innovative – in order to best serve our audiences





# Dear Friends and Supporters,

As we close the books on another year, I am very pleased to reflect on the accomplishments of WGTE Public Media in the 2024 Fiscal Year—a year marked by innovation and unwavering dedication to serving our community.

WGTE has made remarkable strides in content development and educational outreach, affirming our commitment to being a source of trusted information, inspiration, and engagement for all. Our team has focused on producing locally relevant content that resonates with our diverse audience, including the launch of new programs that highlight local stories, amplify underrepresented voices, and explore issues that matter most to our viewers and listeners.

A key highlight of 2024 was our expansion into podcasting with the launch of our Voices Around Us® initiative. Engaging with 22 community members and content creators, 15 brand new podcasts were born covering topics from mental health to history to agriculture. This project has enabled WGTE to offer its expertise to those in the community that have a story to tell and knowledge to share.

This past year, we broadened our community outreach efforts, hosting and attending numerous in-person and virtual events designed to bring people together and foster dialogue. From town hall meetings and community forums to PBS KIDS movie nights, WGTE has been active in connecting with Northwest Ohio and Southeast Michigan. A notable project that has garnered valuable community interaction and feedback has been our “Rethinking Jails + Justice” multimedia initiative. In collaboration with The Board of Lucas County Commissioners and the John D. and Catherine T. MacArthur Foundation Safety + Justice Challenge, WGTE has hosted a live Town Hall event, produced a five-part radio series and soon will launch a 10-episode podcast examining and challenging conventional thinking about over-incarceration that adversely and disproportionately affects racial and ethnic minorities.

In the coming year, we will continue to build on the momentum of 2024 by expanding our digital platforms, enhancing our content offerings, and strengthening our educational reach with young families and educational professionals. We are committed to exploring new ways to engage with our audience, leveraging the power of media to educate, enrich, and entertain.

None of these achievements would be possible without the support of our dedicated members, partners, and donors. On behalf of the Board of Directors, I want to extend my deepest gratitude to each of you. Your commitment to WGTE ensures that we can continue to be a vibrant, essential part of our community’s cultural and informational landscape.

With gratitude,



Theresa Morris  
Board Chair, WGTE Public Media

# Community

WGTE engages and elevates our communities through creative, dependable and accessible programming and resources that educate, entertain and enlighten current generations and those to come.

This year, we expanded our community outreach efforts which sent staff and volunteers marching through Toledo in a holiday parade, hosting a live town hall event focused on criminal justice reform in Lucas County, providing hands on tours for schools and youth groups and so much more.

Learn More About  
Community at  
[wgte.org/events](http://wgte.org/events)

## The Blade Holiday Parade

*Over 20,000 attendees*

WGTE marched the streets of downtown Toledo with the Big Bird balloon and passed out PBS KIDS stickers for The 36th annual Blade Holiday Parade. The Blade Holiday Parade is available online for streaming.

## University of Toledo Solar Eclipse Event

*Over 3,500 attendees*

Darkness can't stop us! In partnership with The University of Toledo, WGTE broadcasted live on the radio all day long for the big event as well as provided many activities for kids and families to enjoy.

## Rethinking Jails + Justice Town Hall

*Over 100 attendees*

A Town Hall panel discussion with community members and leaders examined the challenges of over-incarceration that adversely and disproportionately affects racial and ethnic minorities. 12 different panelists were involved including the Mayor of Toledo and other local government officials.

## Get Out and Play Day!

*1,000 attendees*

A free outdoor adventure hosted at Glass City Metropark in downtown Toledo. Guests got to meet PBS KIDS characters, ride scooters, make crafts and more!

## FM 91 on the Road

*8 events*

WGTE's radio team hit the road throughout the year to broadcast live from special events and locations.

## WGTE Screener Nights

*6 events, 356 attendees*

WGTE opened its studio doors to the community to watch early releases of popular upcoming PBS programming.





Get Out and Play Day!



Be My Neighbor Day



University of Toledo Solar Eclipse Event



The Blade Holiday Parade

# 36,298

Participants at  
WGTE-attended Community Events



Rethinking Jails + Justice Town Hall



Owens Community College Child Care Center Visit  
in partnership with the YMCA of Greater Toledo



# Local TV

WGTE produces and distributes quality educational and entertaining video content to generations within our communities through readily accessible mediums.

Our programs aim to educate and inform our area, from public affairs to balancing business and life to sharing the arts. This year, WGTE continued to provide local programming for the region, including two brand new Toledo Stories documentaries, 32 television show episodes and more.

## Our Channels

### WGTE HD

Our primary channel offers PBS and other national programming as well as local programming highlighting northwest Ohio and southeast Michigan.

### WGTE Create

Often called "do-it-yourself" or DIY, the program genres seen on Create® TV include viewers' favorite public television series and specials on food, travel, home & garden, arts & crafts, fitness and other lifestyle interests.

### WGTE PBS KIDS

A 24/7 children's channel that offers everyone's favorite PBS KIDS shows all day and night.

### WGTE Connects

WGTE "Connects" you to Ohio with the latest content in public affairs, Statehouse news, Ohio arts and culture, education and more.

Learn More About Local TV at [wgte.org/localtv](http://wgte.org/localtv)

## Business | Life 360 with Kristi K.

### 5 EPISODES

*Third Thursday of every month at 8:30 p.m.*

Emmy-nominated TV host Kristi K. Hoffman delves deeper into innovative trends and advances in business and life with fascinating discussions.

## To The Point with Doni Miller

### 26 EPISODES

*Every Friday at 8:30 p.m.*

Host Doni Miller explores complex issues and asks the toughest questions while celebrating local heroes and the successes that help shape our community.

## Toledo Stories

### FREEDOM MEANS NEVER SURRENDER

*Premiered September 14, 2023*

Marian and Wladyslawa Wojciechowski dedicated their lives for a free Poland. Each mustered enormous courage as underground agents during World War II, enduring the darkest of times. Despite their physical and mental tribulations, they pieced together a challenging, productive new life in Toledo, OH.



### MAGIC OF THE OLD WEST END

*Premiered June 27th, 2024*

Magic of the Old West End explores the remarkable history of the Old West End of Toledo, a historic neighborhood boasting some of the largest Victorian and Edwardian homes in the USA. With its rich history of social activism, this community is packed with personality and understands that change happens best when there is power in numbers.

## Listening with Keith Burris

### 1 FEATURED PROGRAM

Local journalist Keith Burris hosts WGTE's newest investigative special, Listening, probing 'Youth in Crisis' with a curious and open mind to learn, where the answers are more important than the questions.







Toledo Stories Screening Event with Marcy Kaptur



BusinessLife 360 with Kristi K.



Magic of the Old West End



196

Local WGTE  
Video Program  
Episodes



Finding Festivals



To The Point with Doni Miller



Freedom Means Never Surrender



Ohio Learns 360 Toledo Museum of Art  
Virtual Field Trip



# Radio

WGTE serves as a voice for our communities, providing quality, highly diverse programming through readily accessible platforms.

WGTE's FM 91 is the only radio station in Northwest Ohio dedicated to the arts and classical music in particular. This area enjoys a vibrant cultural presence, and FM 91 plays a leadership role in developing content that reaches many audiences. FM 91 brought the region over 540 local productions along with its daily broadcasts of NPR news programs this year. While classical music continued to be a focal point in the morning, afternoon and evenings, the likes of longtime programs such as Jazz Spectrum with Fritz Byers and Electronic Currents with Richard Paton continued bringing different sounds and voices on the weekends

## Classical Music

WGTE is the only radio station that plays classical music in the area. Hosts Brad Cresswell and Mary Claire Murphy brings consistency in our morning, afternoon, evening and overnight classics programs.

## Electronic Currents

*Sundays at 8 p.m.*

Richard Paton hosts the rhythmic energy of house to the soaring melodies of epic trance.

## Jazz Spectrum

*Fridays and Saturdays at 8 p.m.*

Hosted by Fritz Byers, Jazz Spectrum is designed as an anthology showcasing the wondrous diversity of jazz.

## NPR

WGTE is the area's NPR provider, airing "Morning Edition", "Here and Now", "All Things Considered" and more to WGTE listeners.

## New Music from Bowling Green

*Tuesdays at 11 p.m. and Fridays at 8 p.m.*

Brad Cresswell hosts this award-winning program featuring live concert recordings from the New Music Festival and Music at the Forefront, alongside the discography of composers, alumni and BGSU faculty.

## Rethinking Jails + Justice

*Available online at [wgte.org/rjj](https://wgte.org/rjj)*

Host Jerry Anderson discussed the community's most pressing questions and concerns surrounding jail reform, incarceration, the justice system, mental health, police reform and more. Guests included academics, those advocating for change and those who have been through the system.

Learn More About Radio  
at [wgte.org/radio](https://wgte.org/radio)



# 92K

FM 91  
Streaming Users



Live from FM 91: Saxophonist Joseph Lulloff and pianist Yu-Lien The

## NEW MUSIC FROM BOWLING GREEN

# 13

Productions

## JAZZ SPECTRUM

# 92

Productions



# 541

Total Local WGTE  
Audio Productions



Jazz Spectrum Host Fritz Byers



University of Toledo Art on the Mall

## ELECTRONIC CURRENTS

# 43

Productions



# Education

At its foundation, WGTE is an educational resource with an enduring commitment to life-long learning for all ages within our communities.

Our educational efforts are at the forefront of extending our mission to serve our youngest learners by focusing on reading and literacy improvement and school readiness for K-12 educators, students, parents and caregivers.

*The following programs and activities were made possible by:*

Be My Neighbor Day

- Fred Rogers Productions
- PNC Grow Up Great
- The Joseph and Judith Conda Family
- The Toledo Zoo

Color with WGTE

- The Joseph and Judith Conda Family

First Book Program

- Owens-Illinois

WGTE Movie Nights

- The Joseph and Judith Conda Family

Share a Story Contest

- The Joseph and Judith Conda Family
- The Taylor Automotive Family
- In memory of Christine J. Weisfelder

Learn More About  
Education at [wgte.org/  
education](http://wgte.org/education)

## Be My Neighbor Day

**500 Attendees**

Be My Neighbor Day provided crafts, resources and activities for hundreds of children to increase community and social and emotional learning.

## Color with WGTE

**108 Submissions**

Coloring helps children develop motor skills, stimulates creativity and develops self expression. We invited children ages 1 through 10 to color the picture on the entry form and submit it to WGTE.

## First Book Program

**2,817 Books**

Working with local organizations who serve children and families, WGTE distributed approximately 3,000 books to children who would otherwise not have the financial resources to purchase books.

## Ohio Learns 360

This initiative provided families, afterschool and summer programs with PBS resources designed to accelerate student learning and support learners in kindergarten through fifth grade. Funded by the Ohio Department of Education.

## WGTE Movie Nights

**410 Attendees**

A series of PBS KIDS' programming screener events that included tailored educational activities, character appearances, story time and more.

## Share a Story Contest

**448 Entries**

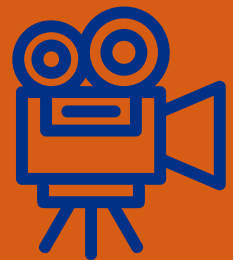
Share a Story encourages young children to express themselves through writing and drawing. Children write and illustrate their stories for judging. A book was created with the winning stories.





# 300

Be My Neighbor Day  
Education Resource  
Bags Given Away



## WGTE MOVIE NIGHTS

# 4

Events

# 410

Participants



# 108

Color with WGTE  
Submissions

# 448

Share a Story  
Entries



# 2,817

First Book Program  
Books  
Given Away





# Local Podcasts

A collection of our local podcasts dedicated to arts, culture, community and news. WGTE reached new analytical heights as more podcasts were produced than ever, gaining new audiences with a significant increase in new content producers. New podcasts that launched this fiscal year include Mary Claire Murphy's "The Patchwork Suite", Savannah Packman's "Raising Up Ohio's Women" and many more. Highlighted in the next section is the launch of WGTE's Voices Around Us® podcasting initiative, the largest spark in content for WGTE this year.

Learn More About  
Podcasts at [wgte.org/  
podcasts](https://wgte.org/podcasts)

## Business | Life After Hours

### 8 EPISODES

Accompanying the "Business | Life 360" TV program, host Kristi K. takes her success-driven guests into discussions about their lives after hours from struggles, triumphs to challenges.

## Raising Up Ohio's Women

### 26 EPISODES

"Raising Up Ohio's Women" shares the stories of some of the most influential women from Ohio. This series honors the accomplishments that women have made in the arts, sciences, mathematics, education and activism to name a few. Each segment highlights a different woman's achievements toward bettering Ohio and our world.

## Shakespeare Full Circle

### 38 EPISODES

Touchstone Award Winner - Best Podcast 2023 + 2022. An award-winning weekly series that explores Shakespeare's dramatically rich sonnets and how they remain relevant today

## The Patchwork Suite

### 13 EPISODES

In "The Patchwork Suite" podcast, composers were asked to draw musical inspiration from a given classical theme and extra-musical inspiration from a textile of choice. This season, composers put their unique spin on "Vals Melódico," a theme from the piano work Valses Poéticos by Spanish composer Enrique Granados (1867-1916).

## Opera Out the Box

### 6 EPISODES

Toledo Opera and WGTE present "Opera Out of the Box," a monthly podcast/broadcast series that unpacks and demystifies opera piece by piece.

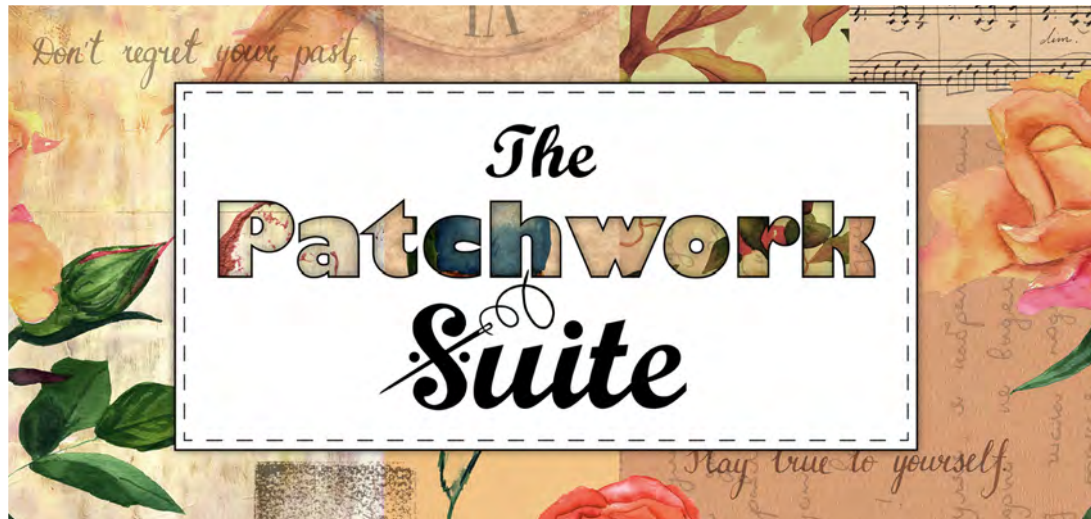


# 24,794

Total Podcast  
Listens Across  
All Platforms



## OPERA OUT OF THE BOX



# business | life

*After Hours*



# 339

Total Podcast  
Episodes

## SHAKESPEARE Full Circle

with Qarie Marshall





# Voices Around Us®

Over the first year of the Voices Around Us® initiative, our **22** content creators created **15** unique podcasts spanning over a dozen topics. Topics range from mental health, agriculture, community building, history, young professionals, women advocacy, art, and so many more. Each podcast brings a unique and diverse perspective that includes experts in multiple fields. There have been a total of **155** VAU podcast episodes, and we're just getting started!

The VAU podcasts have amassed over **12.6 thousand** streams across all major streaming platforms, wgte.org and the WGTE mobile app. These podcasts accumulated over **1,000** listeners across all platforms within the first year. Each podcast features different topics for every listener. WGTE makes it easy for you to find your next binge worthy podcast.

Stream on:



Learn more about the amazing content creators within our community by visiting [\*\*wgte.org/vau\*\*](https://wgte.org/vau)

Voices Around Us® is supported in part by American Rescue Plan Act (ARPA) funds allocated by the City of Toledo and the Lucas County Commissioners and administered by The Arts Commission.



A Gram of Hope uses the events and experiences of everyday people as a seed of motivation to help others gain a true appreciation for life.



In the podcast, Dr. Parinja starts by taking us through the brain, one neural system at a time.



Thousands of agricultural workers live in or migrate to Ohio to work in its number one industry, agriculture. We aim to bring their stories to the forefront.





From tales of entrepreneurship to the rhythms of local music scenes, "Hot Topics, Cool Friends" celebrates the vibrant spirit of our communities.



Lake Effect is a journey through all things Lake Erie, its tributaries and near-shore realm.



Guests discuss their background, education, training and advice for other young professionals. We also take a look at varying pop culture trends and discuss or debunk them.



A series of conversations surrounding the creative journey and all the good and ill associated with making great art in the Midwest.



Centered on the pulse of what makes Toledo and Northwest Ohio great, its people! Take a deep dive into the lives, businesses and experiences of these many awe-inspiring individuals.



With the help of community members and historians, we celebrate the extraordinary history and unique character of our region.



Stories written and performed by people with intellectual and developmental disabilities, tackling topics that range from romantic relationships to work life, childhood to grief and more.



The Mental Gains Podcast focuses on the lives and stories of adults living with persistent mental illness in Northwest Ohio.



A deep dive into the various addictions that have invaded our lives; sugar addiction, internet addiction and various drug and alcohol addictions.



Hosted by Pastor Carl Mitchell, the podcast highlights the legacies of individuals from the northwestern Ohio and southeastern Michigan area.



Featured guests share their experiences, talents, wisdom and stories that inspired them to stand up, speak out, and challenge the status quo.



A compelling podcast series that explores the remarkable journey of "women in sports" within Northwest Ohio and beyond.



# PBS

WGTE provides PBS and PBS KIDS programming to northwest Ohio and southeast Michigan. PBS NewsHour, Masterpiece, NOVA, Sesame Street and Daniel Tiger are just a few audience-favorite national programs.

PBS serves the American public with programming and services to educate, inspire, entertain and express a diversity of perspectives.

Learn More About PBS  
at [watch.wgte.org](http://watch.wgte.org) and  
[pbskids.org](http://pbskids.org)

## Masterpiece: Grantchester

Seemingly quiet 1950s Cambridgeshire village of Grantchester has no shortage of mysteries, murder, and mayhem.

## Vienna Blood

Dr. Max Liebermann and DI Oskar Rheinhardt team up to solve mysteries in 1900s Vienna.

## Lyla in the Loop

A funny and engaging animated series for kids ages 4-8 about Lyla Loops and her fantastical blue sidekick, Stu, who use creative and strategic problem-solving and critical thinking skills to help their family, friends, and community!

## Masterpiece: Nolly

Nolly explored the reign and fall of soap opera star Noele “Nolly” Gordon, one of the most famous faces on British TV in the 1960s and 70s, whose unceremonious firing from her hit show at the height of her career was front-page news.

## GOSPEL

GOSPEL, the latest history series from Henry Louis Gates, Jr., digs deep into the origin story of Black spirituality through sermon and song.

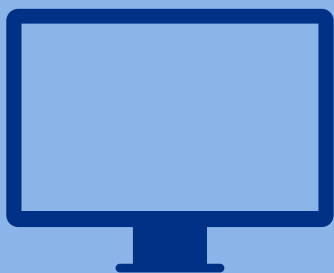
## The American Buffalo

Ken Burns recounts the tragic collision of two opposing views of the natural world—and the unforgettable characters who pointed the nation in a different direction.

## The Great American Recipe

Follow eight talented home cooks from different regions of the country as they compete weekly with their most memorable recipes. In the final week, the top three home cooks vie for a chance to win The Great American Recipe.

11.81  
million



PBS KIDS Total Cross  
Platform Streams



GOSPEL



The American Buffalo



263K

Local PBS  
Digital Users



434K

Local PBS KIDS  
Digital Users



Lyda in the Loop

21<sup>st</sup>  
year in a row  
PBS ranked the  
#1 Most Trusted Media Station

The Great American Recipe





# Digital

WGTE's digital presence allows for easy access to audience favorite content and keeping up to date with all things WGTE Public Media. Grab a phone, a tablet, a laptop or any streaming device to take advantage at any time.

## Ways to Connect

### Website

WGTE's website allows access to our services; programming, TV and Radio schedules, all of your favorite local shows and so much more!

### Social Media

Follow us on our social media Facebook, Instagram, X, LinkedIn, Threads, TikTok and YouTube where we share all things WGTE, PBS, NPR, education and more!

### WGTE App

Explore everything we have to offer on our WGTE app. Listen to podcasts, watch our TV livestream and listen to the FM 91 livestream right at your fingertips.

### Email

WGTE has established a customizable newsletter experience, allowing for subscribers to receive the content they like the most. Our email lists currently include:

- Classical Music
- Educational Resource Center
- Events
- Families & Kids
- News
- PBS Programming
- Podcasts
- WGTE Monthly Newsletter

Learn More About Local TV at [\*\*wgte.org/digital\*\*](https://wgte.org/digital)

# WGTE Digital Projects: Accessible and Intentional

## Classical Conversations

### PODCAST | YOUTUBE

Hosts Brad Cresswell and Mary Claire Murphy speak with some of today's local and international artists about their latest recordings and performances.

## Educational Videos

### YOUTUBE

"Tech Talks" with Christine Danhoff explores different facets of educational technology. "Taking Ownership of Your Learning" is brought to you by the Broadcast Educational Media Commission, the Ohio Department of Education and WGTE Public Media. "Ohio Learns 360: Toledo Museum of Art Virtual Field Trip" teaches basic principles of art appreciation.

## Mucho Amor

### YOUTUBE

A digital series dedicated to highlighting and uplifting Hispanic/LatinX culture in Northwest Ohio through history, community, art and food.

## Old West End Digital Extras

### YOUTUBE

Additional stories filmed during the production of Toledo Stories: Magic of the Old West End.

## Primetime with Cathy

### YOUTUBE | FACEBOOK

Each month, WGTE's Cathy Kamenca discusses PBS and local programming, WGTE Events and more.



## MUCHO AMOR

A DIGITAL SERIES

### WGTE APP

7,738 ↑36%

Total Users

83,749 ↑25%

30 Minute Sessions

### WEBSITE

127,778

Users

557,730

Views

### YOUTUBE

4,338 ↑12%

Subscribers

70% Increase in  
New Subscribers

111,984 ↑11%

Views

### SOCIAL MEDIA FOLLOWERS



Facebook

5,723

↑8%



Instagram

1,864

↑11%



X

4,833

0%



# Membership

WGTE is non-commercial, member-supported public media organization. Your membership provides the largest single-source of funding for WGTE Public Media!

# \$108,865



Raised from  
331 Donors  
During our 10th Annual  
Day of Giving (D.O.G.)

# 8,755

Members



# \$1,483,187

Total Revenue



Lyla in the Loop Screener



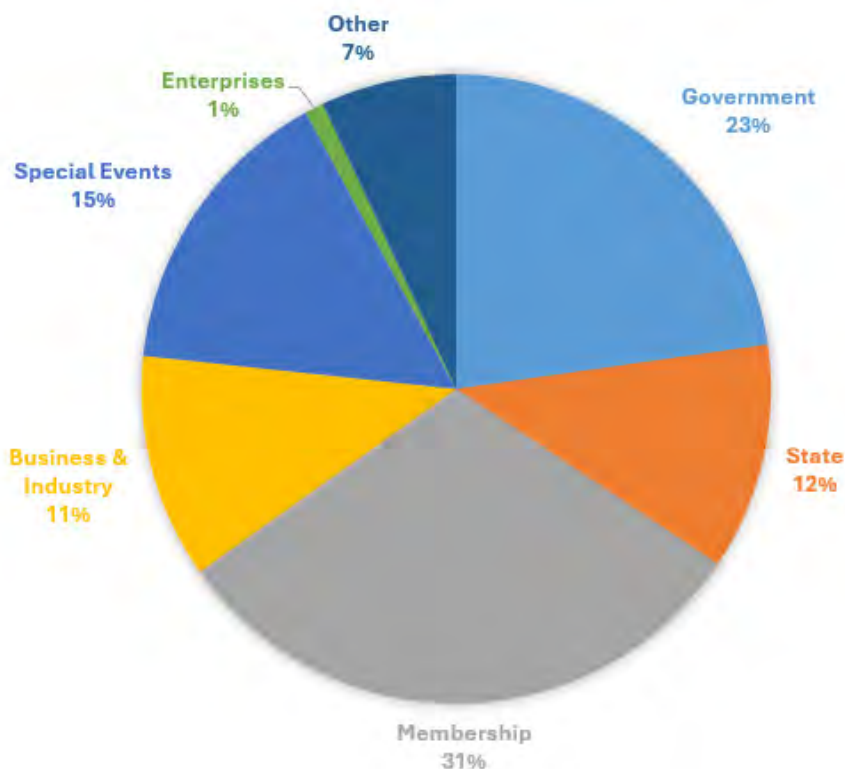
Average Gift of

# \$169<sup>42</sup>

Learn More About  
Membership at  
[wgte.org/support](http://wgte.org/support)

Underwriting and Non-Profit  
Orders Totaling  
**\$248,504**

## Fiscal Year 2024 Revenue



## Development and Financials

Financial investments in WGTE Public Media enable us to make our area a better and enriching place to live. Developing and sustaining relationships with individual supporters, underwriters, community partners and grantors are key components that keep WGTE's mission alive.





# Fiscal Year 2024 Corporate/ Organization Supporters

WGTE creates quality and educational programming because of our supporters, underwriters, community partners and grantors. We want to give a big thank you to our generous supporters this year.

Special Thanks to  
Clement O. Miniger  
Memorial Foundation for  
support of

**2023 Day of Giving (D.O.G.)**

**Spring 2024 FM 91  
Fundraiser**

## Underwriting

American Guild of Organists - Toledo Chapter  
Aly Sterling Philanthropy  
The Andersons, Inc  
Area Office on Aging  
Bowling Green State University  
BGSU - College of Musical Arts  
Black Swamp Arts Festival  
Board of Lucas County Commissioners  
Lucas County CASA  
Fulkerson Jeweler & Clock Shop  
Community Arts Network  
Communica / Knight Insurance  
Cowie Family Charitable Trust  
Dayton Performing Arts Alliance  
Educational Service Center of NE Ohio  
Epworth United Methodist Church  
Exceptional Artists  
Forte Music School  
First Unitarian Church  
The Furious Bongos  
Joanne F. Gall, Attorney at Law  
Gathering Volumes Bookstores  
Islamic Center of Greater Toledo  
Patricia K. Jarzabski Trust  
KeyBank  
Lima Symphony  
Lima Civic Center Foundation  
Lourdes University  
Masterworks Chorale  
Metroparks Toledo  
The Toledo Museum of Art  
The Nature Conservancy  
Owens-Illinois  
Rosary Cathedral Concert Series  
St. Francis de Sales School  
St. John's Jesuit High School & Academy  
Taylor Automotive  
Toledo Choral Society  
Toledo Community Foundation  
Thread Marketing Group  
Timothy's Perrysburg Foundation  
Toledo French Alliance  
Toledo Swiss Singers  
Toledo Opera Association

Toledo Opera  
Torrence Sound Equipment Company  
Toledo Repertoire Theatre  
Toledo School the Arts  
Toledo Alliance for The Performing Arts  
Toledo Symphony Orchestra  
University of Michigan  
University Musical Society  
University of Toledo  
University of Toledo - College of Arts & Letters  
University of Toledo College of Law  
Valentine Theater  
WFWA-Fort Wayne Public Television  
Woodcraft  
Yes Ministries

## **Educational Resource Center**

Acorn Alley, Benton-Carroll-Salem Schools  
After School All Stars  
After School Network/Partners in Education  
Believe Center  
Big Brothers Big Sisters of Northwest Ohio  
Bounty Collegium  
Boys & Girls Clubs of Toledo  
Brightside Academy  
Broadcast Educational Media Commission  
Buckeye West Educational Service Center  
Champions for Children, Port Clinton City Schools  
The Joseph and Judith Conda Family  
Connecting Kids to Meals  
Divine Mercy School, Payne  
East Toledo Family Center  
Educare Academy  
Escuela SMART Academy  
Fred Rogers Productions  
Freedom School  
Greater Toledo YMCA  
Health Partners of Northwest Ohio  
Help Me Grow Central Intake  
Liberty Center Library  
Ohio Department of Education  
Ohio Department of Job and Family Services  
Owens-Illinois  
Maumee City Schools Summer camps  
Mercy Health Partners

Metroparks Toledo  
New Horizons Academy  
Padua Center  
Perrysburg Heights Association  
PNC Grow Up Great  
PBS  
Sandusky County YMCA  
Sara's Garden  
Seaway Marketplace  
St. John's School, Defiance  
St. Mary's School, Edgerton  
St. Patrick's of Heatherdowns School  
Summer Adventures, Fayette Local Schools  
Sylvania Schools  
The Taylor Automotive Family  
The Toledo Blade  
Toledo Christian School  
Toledo Excel  
Toledo Lucas County Public Library  
Toledo Museum of Art  
Toledo Parent  
Toledo Public Schools  
Toledo School for the Arts  
Toledo Tomorrow  
Toledo Zoo  
University of Toledo  
Waite High School  
Washington Local Schools  
Wayman Palmer YMCA  
Williams County YMCA  
Woodlands Elementary  
YWCA Child Care Resource & Referral  
Zepf Center

## **WGTE TV and FM Program Production Support**

American Rescue Plan Act (ARPA)  
Anastasia Fund  
Andersons Foundation  
Area Office on Aging  
Bowling Green State University  
Broadcast Educational Media Commission  
Buckeye Cablesystem  
HayRobin Media Productions LLC  
KeyBank



# Fiscal Year 2024 Corporate/ Organization Supporters

WGTE creates quality and educational programming because of our supporters, underwriters, community partners and grantors. We want to give a big thank you to our generous supporters this year.

Lucas County Board of County Commissioners

MSNBC - NBC Universal

PBS

Polish Community Center

ProMedica

Public Works Collaborative

TCS US Production 29, Inc.

Toledo Museum of Art

Toledo Opera

University of Toledo, John B. and Lillian E. Neff College  
of Business and Innovation

## **Make a Monetary Donation to WGTE**

WGTE Public Media is member and donation supported. We invite you to join WGTE Public Media or renew your membership at any amount that is appropriate for you.

## **Donate Your Vehicle to WGTE**

Donating a vehicle to WGTE is fast, easy and secure. We are happy to accept any vehicle - running or not - including cars, trucks, boats, RVs, motorcycles and more!

## **Include WGTE in Your Estate Plan**

Your estate plan can also be used to support charitable causes that matter most to you, such as the quality programs and education services offered to our community by WGTE.

## **Sign Up for Educational Workshops**

Our Education departments hosts many educational workshops for parents, teachers and caregivers year round.

## **Attend a Community Outreach Event**

WGTE has many events catered to the local community. For a full list of our community events head to our website at [wgte.org/events](http://wgte.org/events).

## **Volunteer**

WGTE offers a variety of opportunities with varying degrees of commitment – weekly, monthly and seasonal. Training is always provided.

## **Encourage Friends and Family to Connect**

With new features to make your listening experience better we invite you to connect to WGTE for a wide variety of rich diverse programs.

# **Ways to Get Involved**

Whether you are a lifelong public media supporter or are brand new to the programs and services WGTE Public Media offers, there are many ways to get involved and stay connected!

Learn More About Ways  
To Get Involved at  
**[wgte.org/support](http://wgte.org/support)**